

15" Centric GB Display

Electrical Description

Display Characteristics:

Type: 15.0" Active Matrix TFT
Dot Number: 1024 x 768 Pixels
Dot Pitch: 0.297mm
Active Display Area: 304.1 mm x 228.1 mm
Response Time: 25ms Average- Typical
Contrast Ratio: 450:1 Typical
Brightness/Light Intensity: 450 cd/m² (Nits) - Typical
Viewing Angles L/R/U/D: 75°/75°/60°/50°
Backlight Life: 50,000 Hours- Typical
Colour Depth: 16.7 Million (Depending on Graphics Card)

Dimming:

Range: 0-100% (Dimming Ratio 1000:1)

DVI-I Input:

Digital Interface: DVI 1.0 Compatible Interface
85Hz Operation

VGA Input:

Analog: RGB 0.7-1.0V p-p
Impedance: 75 Ohms
Sync. Type/Level: Sync-on-Green (-ve) 0.3V

Synchronisation Range:

Horizontal Scan: 15-100 kHz
Vertical Scan: 30-100 Hz

Resolutions:

VESA Support for: 1280 x 1024 SXGA
1024 x 768 XGA*
800 x 600 SVGA
640 x 480 VGA
**Recommended for optimised resolution*

Composite Video Input:

Composite Interface: PAL, NTSC, SECAM

Input Voltage:

AC (Auto-Ranging) Input: 115/230V AC +/- 10%

Power Consumption:

AC Supply: 55W

Environmental:

**Operating Temp: -15 to +55°C (IEC 60945)
Storage Temp: -25 to +70°C
Operating Humidity: 30% to 90% (Non-Condensing)
Storage Humidity: 10% to 90% (Non-Condensing)
Vibration: +/-1mm, 2 to 13Hz:0.7g 13 to 100Hz

**We DO NOT recommend routine operation @ extreme temperatures.*

Mechanical Description

Construction:

Finish: Front Bezel - Bonded Glass
Rear Housing - Modular Metal
Housing: Chemically Treated Metal
Front Sealing: Front Bezel IP67
Protective Safety Glass: Conturan Hardend, Laminated & Anti-glare Coated
Ventilation: Convection (No Fans)

Dimensions:

Display for Flush Mounting (mm): 11.49" (292) H x 14.29" (363) W
X 3.05" (77) D
Panel Cut-out (mm): 10.98" (279) H x 13.78" (350) W

Weight:

Weight (kg): 12 lbs (5.4)

Connections:

DVI Signal: DVI-I Female
VGA Signal: 15-pin Female D-SUB
Composite Signal: RCA Female Jack
S-Video: S-Video Socket
Remote Keypad Interface: 25-pin Female D-SUB
RS232 Control: 9-pin Female D-SUB
AC Power: IEC Inlet

Menu Controls:

Remote Membrane Keypad with Buttons for; Menu and Power. Back-
Brightness Knob: light Bright Potentiometer & AC LED.
Backlight Brightness: Remote Panel Knob (Potentiometer)

Shipping:

Carton Size (cm): 21" (53) x 20" (51) x 10" (25)
Weight (kg): 26 lbs (12)

Approvals / Warranty

Compliance:

Maritime / Military: IEC 60945 4th Edition. IEC 61174 (ECDIS), IEC 60936 (RADAR) & IEC 60529 (IP). MIL-STD-810F & MIL-STD-901D. IACS e10 (to obtain ABS, BV, CCS, GL, KR,LR, NK, RINA, RS).

Time Approvals:

ABS—Pending

Limited Warranty:

2 Year

Ordering Codes

15" Centric GB Display: 23-1510-GB

Canadian Headquarters: **Nauticomp Inc.**
8 Callaghan Road
Lindsay, Ontario,
Canada, K9V 4R4.
p: +1 705-328-2992
f: +1 705-328-2990

United Kingdom: **Nauticomp Europe Limited**
Barham Court,
Teston, Maidstone, Kent
ME18 5BZ, United Kingdom
p: +44 (0) 1622 618707
f: +44 (0) 1622 735469

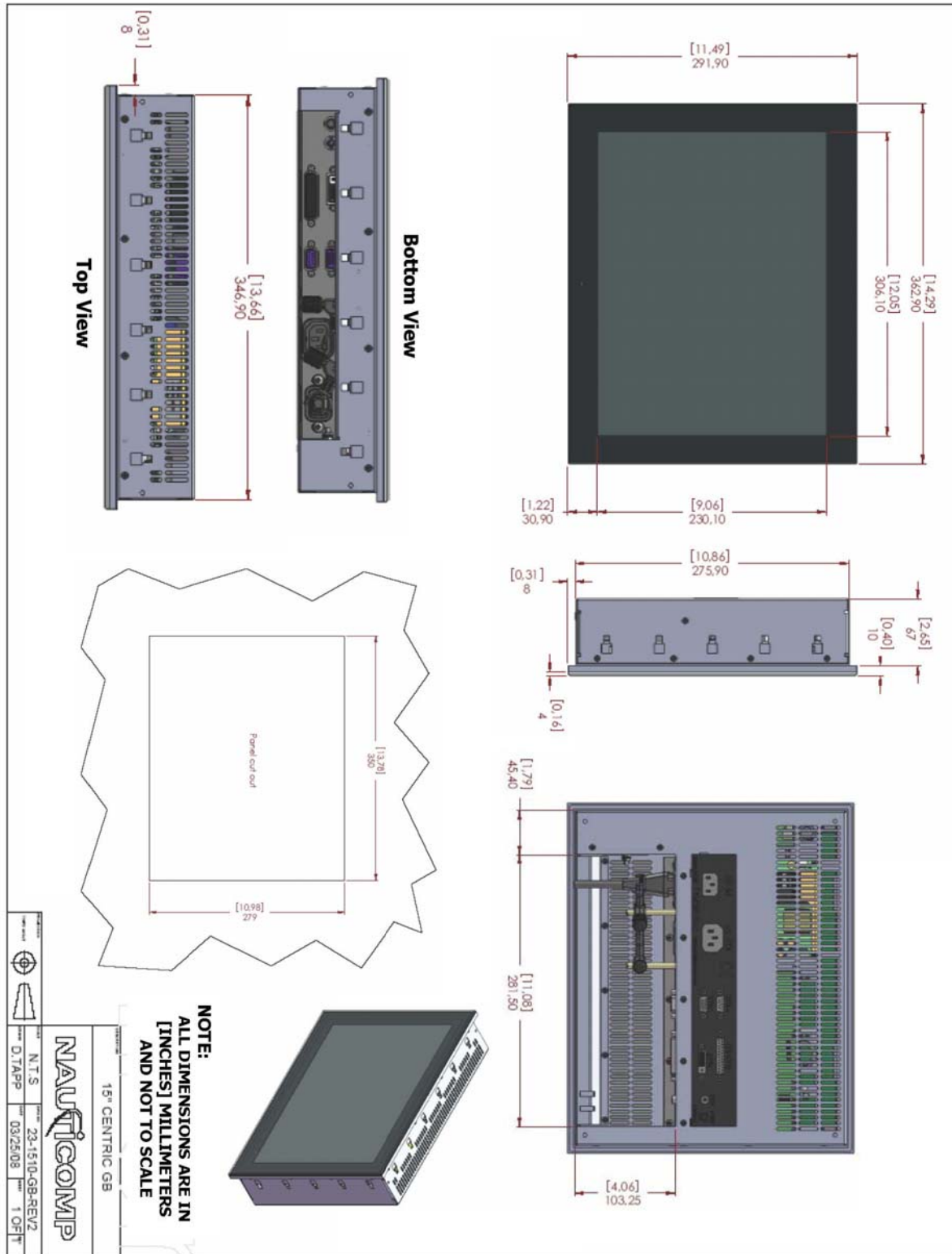
United States: **Nauticomp International**
3886 SW 30th Avenue
Fort Lauderdale, Florida
United States 33312.
p: +1 954 235 4875
f: +1 705-328-2990

URL: www.nauticomp.com E-Mail: sales@nauticomp.com

Due to a policy of continuous product development NAUTICOMP reserves the right to change specifications and descriptions without prior notification. All trade marks acknowledged.

Measurements—Display

Note: All dimensions are in mm and (inch)



Canadian Headquarters:
Nauticomp Inc.
 8 Callaghan Road
 Lindsay, Ontario,
 Canada, K9V 4R4.
 p: +1 705-328-2992
 f: +1 705-328-2990

United Kingdom: **Nauticomp Europe Limited**
 Barham Court,
 Teston, Maidstone, Kent
 ME18 5BZ, United Kingdom
 p: +44 (0) 1622 618707
 f: +44 (0) 1622 735469

United States: **Nauticomp International**
 3886 SW 30th Avenue
 Fort Lauderdale, Florida
 United States 33312.
 p: +1 954 235 4875
 f: +1 705-328-2990

URL: www.nauticomp.com E-Mail: sales@nauticomp.com