

NINA PENX Remote Processor

System Specifications

System Characteristics:

Processor:	Pentium Dual Core E2160/1.8Ghz 1M, 800 FSB
Operating System:	Windows XP Professional NTFS file system 667
Memory:	2 GB Non ECC 533 Mhz DDR2
Keyboard:	USB Keyboard
Video:	Integrated Video Intel GMA 1300
Hard Drive:	80 GB SATA 3.0 Gb/s
Floppy Disk Drive:	D-Module 1.44MB Floppy drive
Mouse:	USB 2 button with scroll
Chassis:	RoHS Compliant Lead Free Chassis/Motherboard
Optical Drive:	8x DVD +/- RW
Sound:	Integrated AC97 Audio / Internal Speaker
Cable Adapter:	DVI to VGA Video Adapter
Documentation and Disks:	Resource CD Diagnostics and Drivers
Power Input:	12V/24V DC or 110 VAC @ 50/60 Hz 11 @ 12V DC draw
Ethernet:	RJ-45 Integrated network adapter
Serial Ports:	1 9 pin D-Sub
USB Ports:	5 USB 2.0
Audio Ports:	Microphone, Stereo in, Stereo out
Video Ports:	DVI-I with 15 pin VGA and DVI-D adapter
Parallel Ports:	1 25 Pin parallel port
Power Supply:	480w external

Input Voltage:

DC Input: 12.0V DC Regulated

Via external power supply - Refer to ordering codes...

Environmental:

*Operating Temp:	32 to +110°F
Storage Temp:	-4 to +140°F
Operating Humidity:	30% to 90% (Non-Condensing)
Storage Humidity:	10% to 90% (Non-Condensing)
Shock:	10g, 11msec 1/2 Sine Wave +/-1mm, 2 to 13Hz:0.7g 13 to 100Hz
Vibration:	100Hz

**We DO NOT recommend routine operation @ extreme temperatures.*

Mechanical Description

Construction:

Finish:	Black Fine Textured Semi Gloss Powder Coat
Housing:	Preformed Aluminium shock mounted
Ventilation:	Internal PC Fan cooling with Ventilated Case

Mounting Style:

Surface:	8 bolt direct through chassis, horizontally or vertically, in- verted
----------	---

Dimensions:

Processor:	11.11/16"W x 3.7/8"H x 10.3/16"D 296.86mm W x 98.43mm H x 258.76mm D
------------	--

Weight:

Weight (kg): 12.15 lbs (5.12kg)

Approvals / Warranty

Compliance: CL, UL, ULL, CSA, CE
FCC Part 15 Section 15.109
3 Year on-site

Limited Warranty: (serviced by Dell computer)

Ordering Codes

Configuration:

Nina Penx: 40-7778

Please select external power supply from list below...

External Power Supply:

External 115/230V:	Standard
Optional External 12V DC:	00-0306 deletes standard 115/230
Optional External 24V DC:	00-0307 deletes standard 115/230

Shipping:

Carton Size (cm):	21" (53) W x 20" (51) H x 10" (25) D
Weight (kg):	26.0 lbs (12)

Canadian
Headquarters: **Nauticomp Inc.**
8 Callaghan Road
Lindsay, Ontario,
Canada, K9V 4R4.
p: +1 705-328-2992
f: +1 705-328-2990

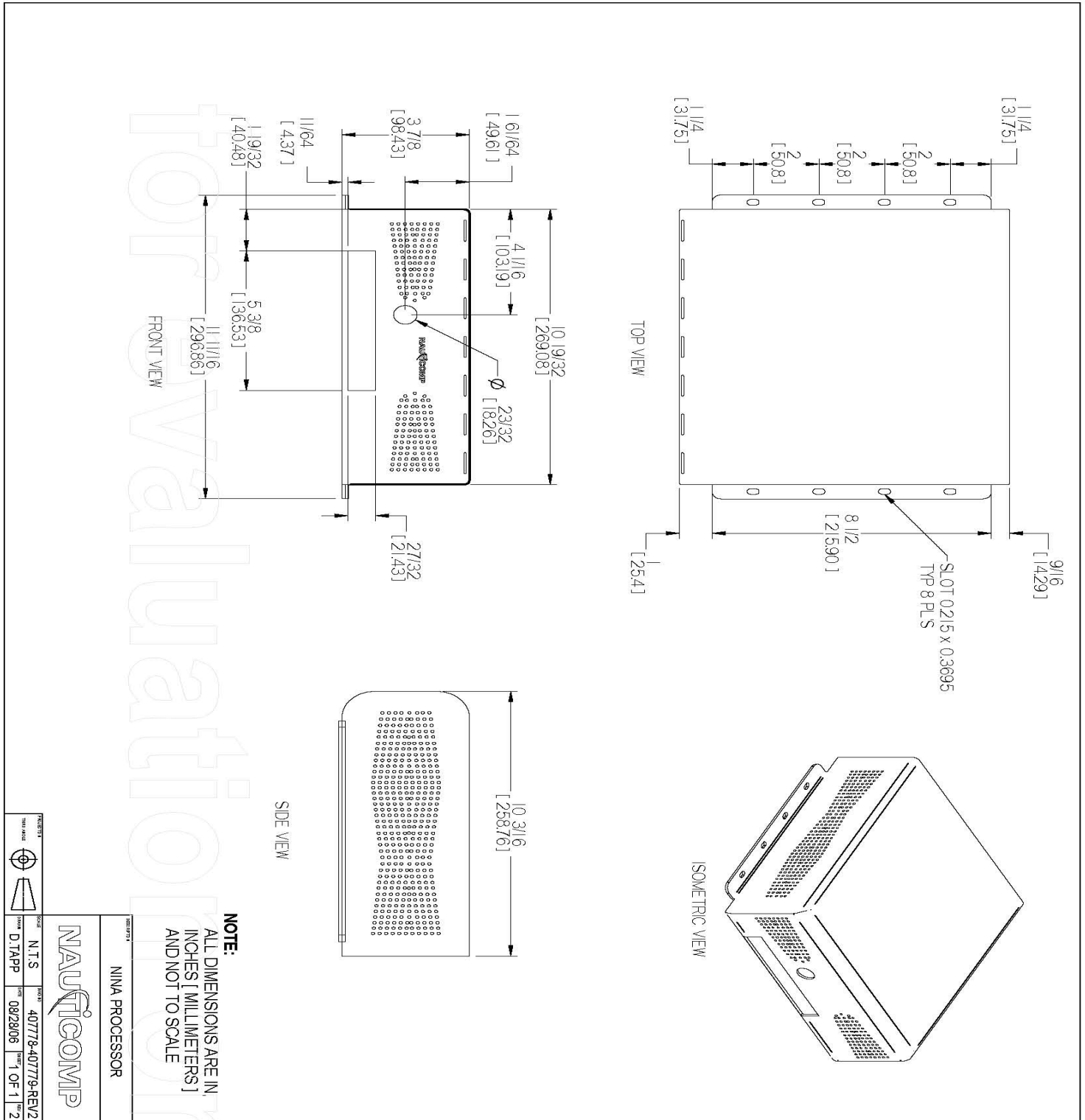
United Kingdom: **Nauticomp Europe Limited**
Barham Court,
Teston, Maidstone, Kent
ME18 5BZ, United Kingdom
p: +44 (0) 1622 618707
f: +44 (0) 1622 735469

United States: **Nauticomp International**
3886 SW 30th Avenue
Fort Lauderdale, Florida
United States 33312.
p: +1 954 235 4875
f: +1 705-328-2990

URL: www.nauticomp.com E-Mail: sales@nauticomp.com

Due to a policy of continuous product development NAUTICOMP reserves the right to change specifications and descriptions without prior notification. All trade marks acknowledged.

NINA PENX Remote Processor



Canadian Headquarters: **Nauticomp Inc.**
8 Callaghan Road
Lindsay, Ontario,
Canada, K9V 4R4.
p: +1 705-328-2992
f: +1 705-328-2990

United Kingdom: **Nauticomp Europe Limited**
Barham Court,
Teston, Maidstone, Kent
ME18 5BZ, United Kingdom
p: +44 (0) 1622 618707
f: +44 (0) 1622 735469

United States: **Nauticomp International**
3886 SW 30th Avenue
Fort Lauderdale, Florida
United States 33312.
p: +1 954 235 4875
f: +1 705-328-2990

URL: www.nauticomp.com E-Mail: sales@nauticomp.com

Due to a policy of continuous product development NAUTICOMP reserves the right to change specifications and descriptions without prior notification. All trade marks acknowledged.